

SWISS ERA

**SUPERIOR
QUALITY**

The
Luggage
that knows
its way
around the
World

TRAILING
with you,
taking you
PLACES

SE - 1501

We design the
most practical
and stylish
luggage bags
to accompany
you on every
journey



DURABLE, CHIC, AND READY FOR ANY
ADVENTURE
THAT COMES YOUR WAY

FOR YOUR
PERFECT
TRIP

PRODUCT FEATURES



LIGHTWEIGHT 4 X MULTI-DIRECTION DOUBLE WHEELS FOR MORE STABILITY AND BETTER PERFORMANCE, **360°** ROTATING



LIGHTWEIGHT INTERNAL & RETRACTABLE ALUMINOUS TROLLEY SYSTEM WITH **PUSH BUTTON LOCKING HANDLE**

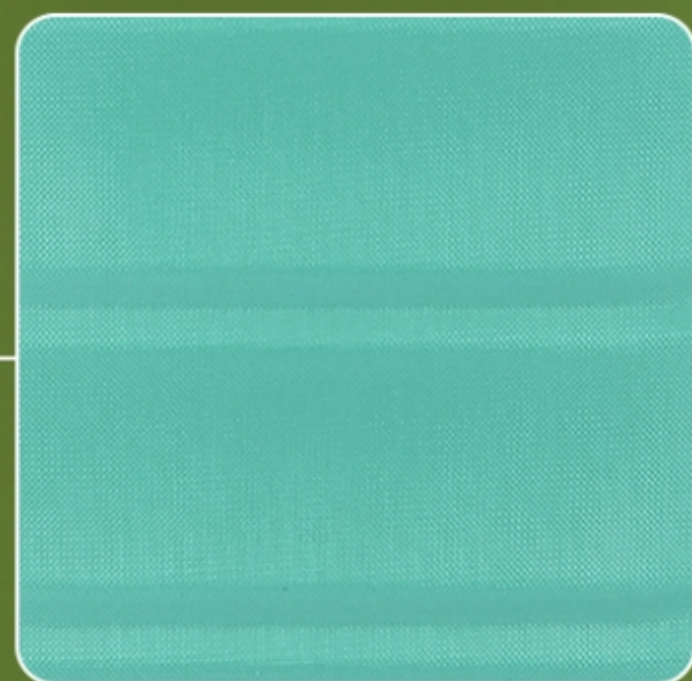


TSA INTEGRATED SECURE FLAT COMBI LOCK WITH LOCKABLE ZIP PULLERS FOR MORE SECURITY



VIBRANT RANGE OF COLOURS

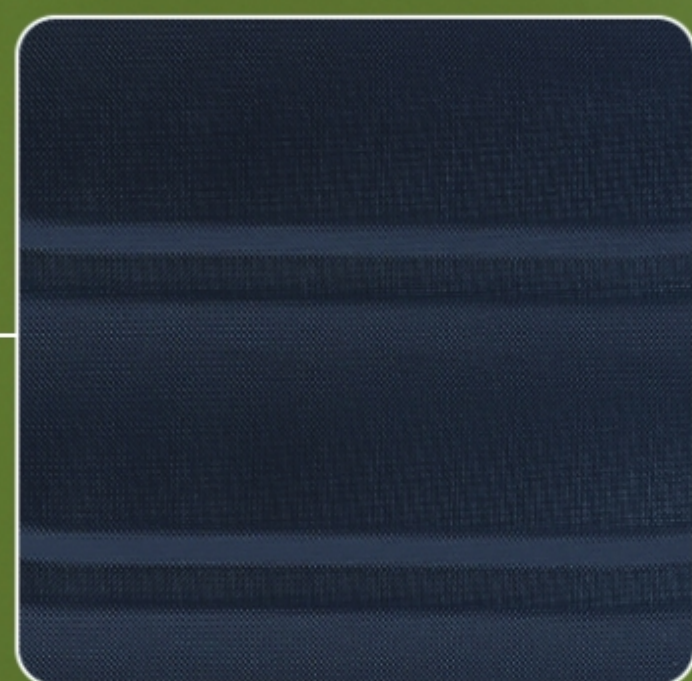
TEAL GREEN



SILVER



NAVY BLUE



TURQUOISE



PINK



STYLISH FROM EVERY CORNER



Sizes Available

3 pc set - 20"/24"/28"

2 pc set - 24"/28"



www.traveltimeluggage.com